

*City of Cochran,
Georgia*

TESSIE W. NORRIS
COCHRAN BLECKLEY LIBRARY

P. O. BOX 542
COCHRAN, GA 31014

*City of Cochran,
Georgia*

Compiled, Edited and Distributed by The
Cochran-Bleckley Junior Chamber of Com-
merce.

1953

INTRODUCTION

Cochran, located in the heart of Georgia and in agriculturally rich Bleckley County, has a low tax rate of 22 mills, almost half of which, or 10 mills, is allocated to the city school system.

The City, originally Dykesboro, is one of the pioneer cities of this section and was incorporated in 1869. At that time it was in Pulaski County. It is twice as old as the county in years but very young in spirit and enterprise.

It is the county seat of Bleckley County now. It is known as the "Home of Champions" as the city and county boast of several all-time high records in farm production, such as cotton and corn. It is the home of the famous "Banner Ham."

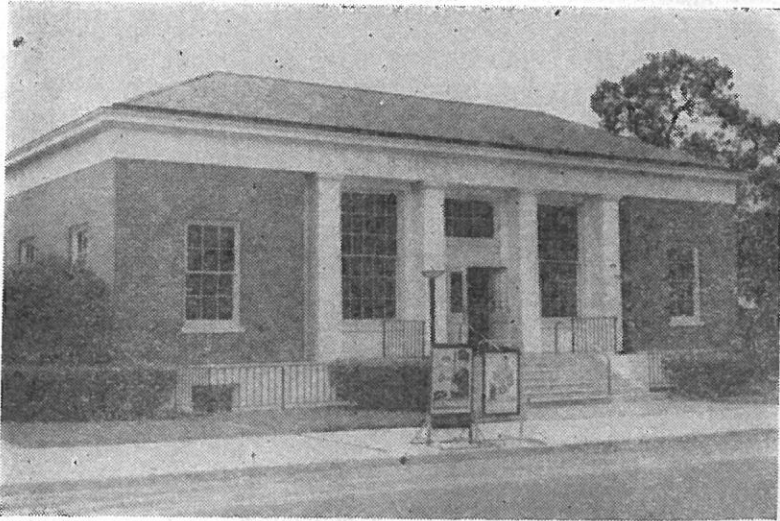
The progressive spirit of the city was demonstrated in April 1953 when a bond issue totaling \$115,000 was voted by a large majority. The money is to be used for water and sewerage, and school improvements, and for the completion of the municipal swimming pool. At the same time, a favorable vote was cast for the issuance of certificates for \$630,000 for the purpose of acquiring a Natural Gas system. The amount is to be paid out of the proceeds of the system and does not constitute a debt against the city. The service was inaugurated in late 1953 and should be added incentive for new industry.

Fine highways link the city to interstate traffic arteries. Greyhound and Trailway bus lines serve the city and the Southern Railway system is a vital part of the industrial life of the community. Several trucking lines are important cogs in keeping industrial wheels rolling in this section.

Cochran and Bleckley County offer vast opportunities for pleasant community life and progressive business life and are always awake to the possibilities of its industrial potential.



Bleckley County Courthouse



The Cochran Post Office

CITY AND COUNTY GOVERNMENTS

The city and county administrations are elected to their respective offices by the people. The officers in charge have always been cooperative and eager to use their influence toward the betterment of the community.

Both the city and county officials have been active in keeping the tax rates low and yet bringing many needed improvements to us through their combined efforts.

The city is headed by a Mayor and Council form of government and the county utilizes the office of the Commissioner of Roads and Revenues for its functions.

All of the farm to market roads leading to town have been paved as have most of the city streets except in the outlying areas of the city.

For the city, a capable police force and fire department are maintained. The county sheriff's office is always capably manned.

The county is in the Sixth Congressional District and was created by an Act of the Georgia Legislature on July 30, 1912.

The city boasts widened streets in the business district and a new arc light white way. A new well has recently been completed that affords an adequate water supply and a natural gas system has been installed as an invitation to new industry.

Many other improvements have been made or are under consideration. Civic clubs are very active and are always willing to give able assistance where needed.

HOMES

Cochran is justly proud of its homes—the fine old dwellings, the modern structures recently completed, and those now under construction.

The homes in the city and county are designed for comfortable living. In the city, the tree lined streets and the beautiful lawns are symbolic of the typical Southern town. Smaller homes blend with those which were built for the larger families.

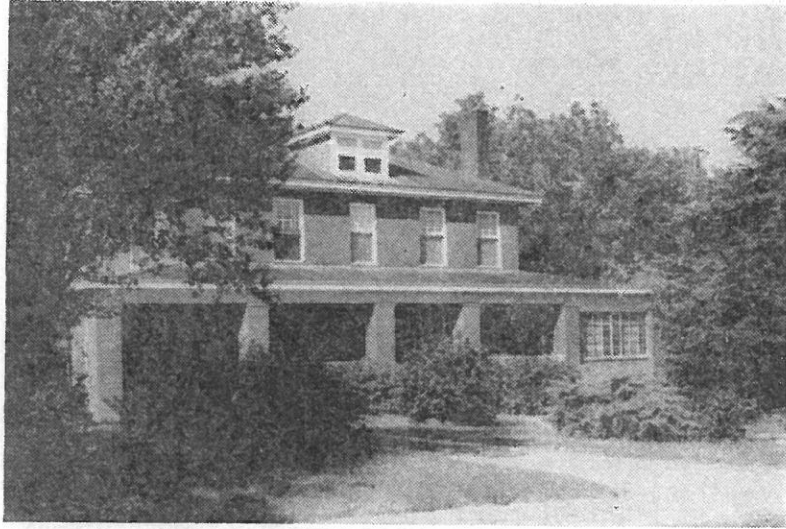
Two housing projects, with a total of sixty-four units are now in operation furnishing low-cost, economical facilities to their residents.

Land area for home building is vast and construction is keeping pace with the growth of the community. Building materials are readily available and the supply of skilled labor is adequate.

The Garden and Womans clubs are active in promoting civic refinement.

• Educational and religious facilities take their places in the community and assist in making happy homes and pleasant living.

An annual pilgrimage is held and some of the homes are open to the public. For those who make the pilgrimage it is a study in Southern living at its best.



The Wallace Harris Home



The A. B. Wynn Home



First Methodist Church



First Baptist Church and Educational Building

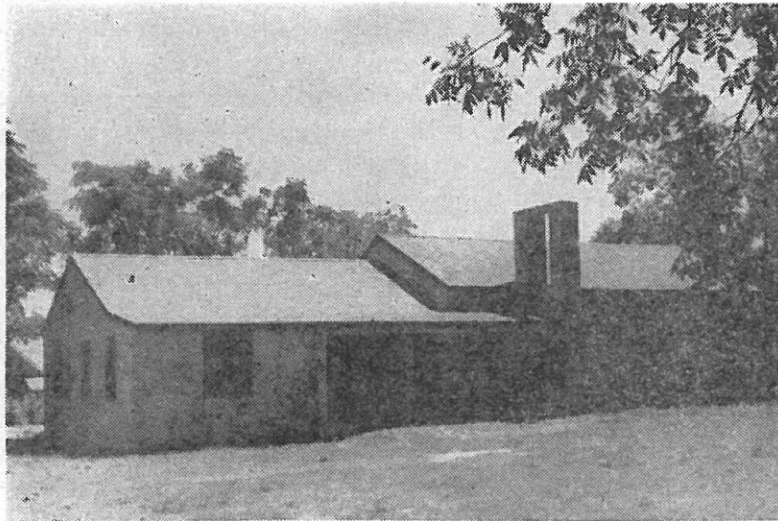
RELIGION

At least six denominations form the nucleus of the religious life in the city and county. Of these, the Methodists and the Baptists have the larger membership as is the case of most Southern cities.

The First Methodist Church of Cochran was organized in 1866; the Baptist Church in 1869.

Since the time of organization both have experienced great numerical growth and both denominations are continuing to expand their physical plants with the addition of modern educational buildings and pastoriums.

The Trinity Episcopal Church is the latest denomination to build a house of worship in the city. The Trinity Church in Cochran is new in name and building but there have been loyal Episcopalians in the city for more than fifty years. Their recently constructed building will serve as a rectory and chapel when their permanent church building is constructed.



New Rectory of Episcopal Church

EDUCATION

The city and county maintain separate school systems with boards of education having jurisdiction over each system.

The City Board has recently acquired a forty acre tract of land upon which a modern high school plant will be constructed which will replace the present high school. The grammar school, with which the high school now shares its facilities, will occupy the entire building upon completion of the new plant.

Money for the construction has already been allocated by the state.

A survey by the State Department of Education has been made and the city system was commended for its progress. The system has been accredited by Georgia Accrediting Commission and Southern Association of Colleges and Secondary Schools.

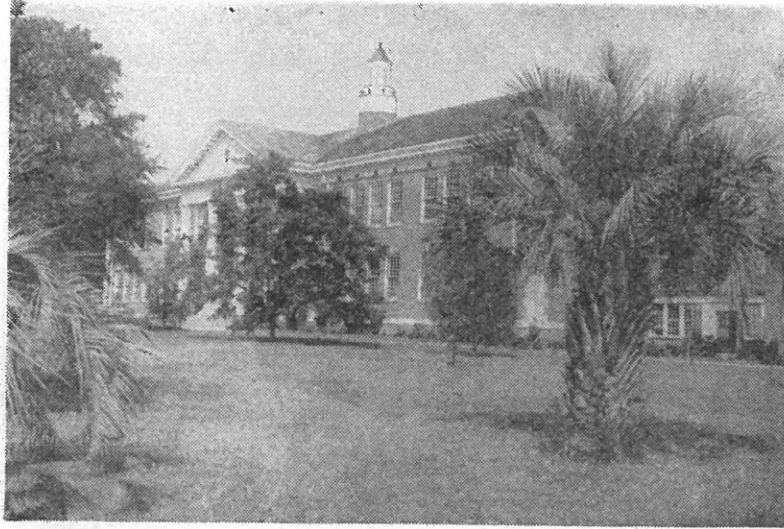
The Parent-Teachers Association is most active and has rendered invaluable service to the schools.

Lunch rooms in both city and county schools offer some of the best programs for students of any in this section. Modern equipment and methods are in use and provide balanced diets and hot lunches as well as valuable lessons in manners, health, and respect.

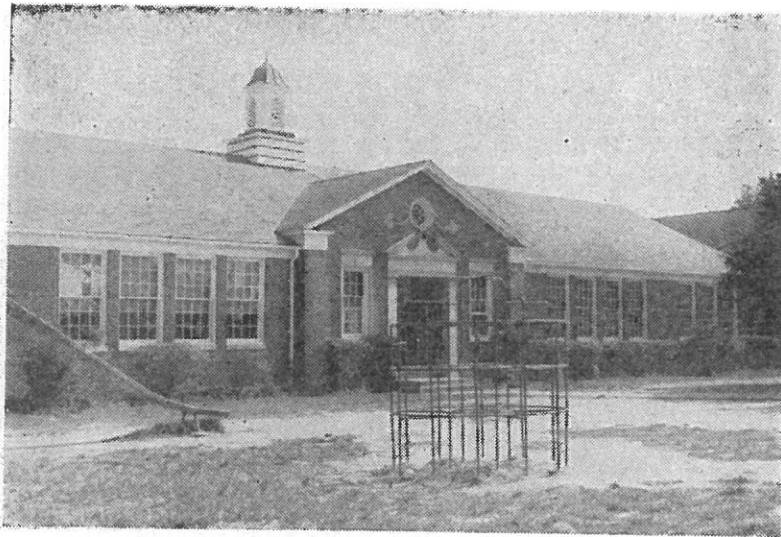
The county system maintains schools in every principal district of the county. These schools are served by an efficient bus system.

The two systems are working under contract with the aim of maintaining the best high schools possible for all students.

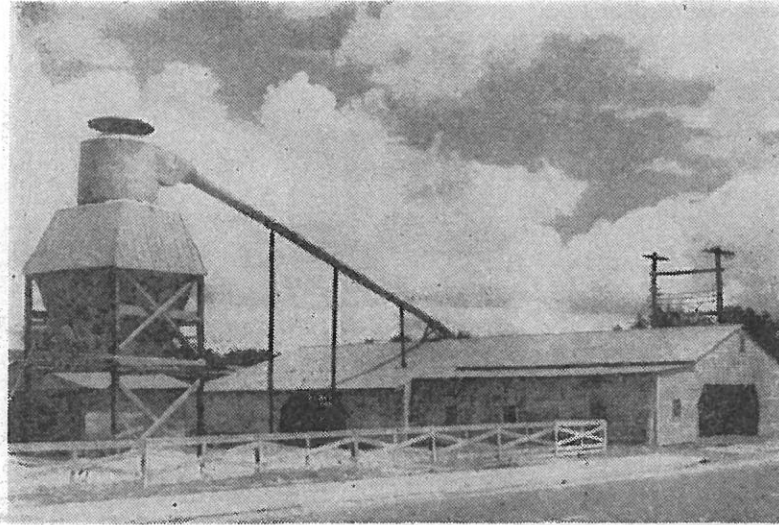
Cochran is also the home of Middle Georgia College, a junior college of the University System of Georgia. It is under the jurisdiction of the Board of Regents, is co-educational, and has an average enrollment of four hundred students.



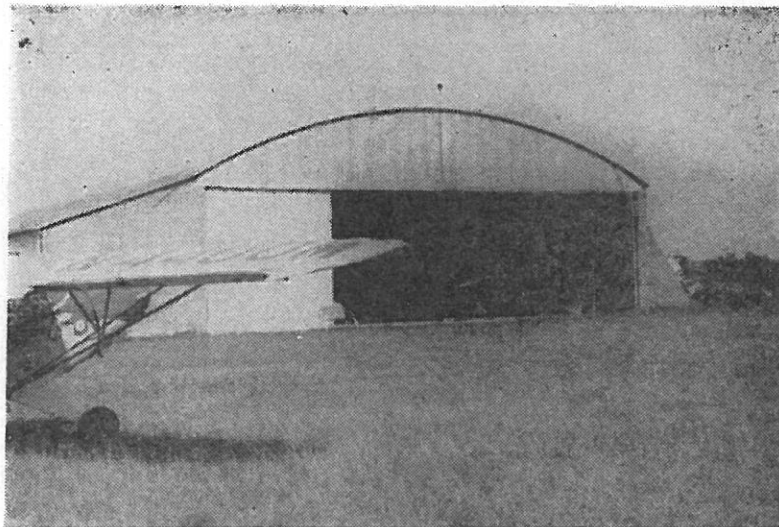
Walker Building, Middle Georgia College



The Grammar School Building



Edmondson-Griffin Lumber Company



Cochran Air Service and Airport

INDUSTRY

A vitally important step for both individuals and industry was taken when a favorable vote was cast to bring natural gas to this community. The management of the system will be handled by the City Government and should prove very economical for commercial consumers.

A shirt company is Cochran's largest factory and user of local labor. Some six hundred residents are employed and manufacture men and boys' dress and sport shirts. This plant also operates its own box factory.

Other local industries include a meat packing company, three large lumber companies, a construction company, a wholesale house serving tractor dealers in six states, and several peach farms operating packing sheds in season.

Nearby users of local labor are the Robins Air Force Base, Warner Robins, Georgia, and the Naval Ordnance Plant, Macon, Georgia.

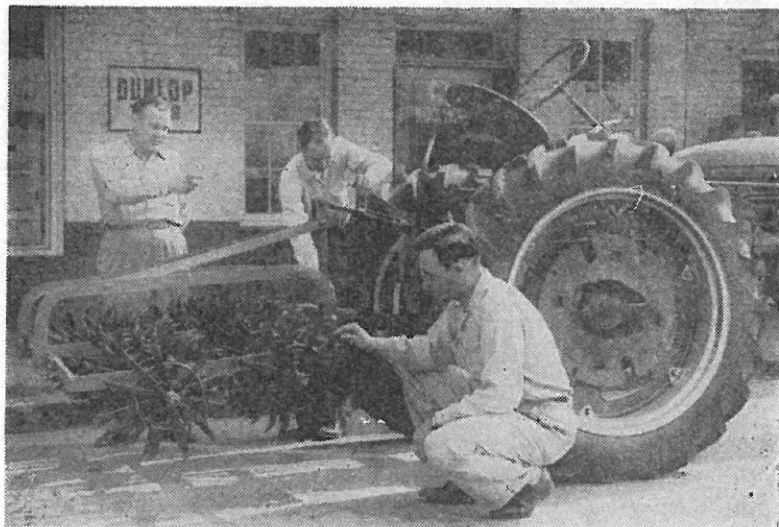
There are four gins and five warehouses in this county to serve the needs of the farming industry.

Electrical power is furnished to Cochran by the Georgia Power Company and to the county by the Oconee Electric Membership Corporation.

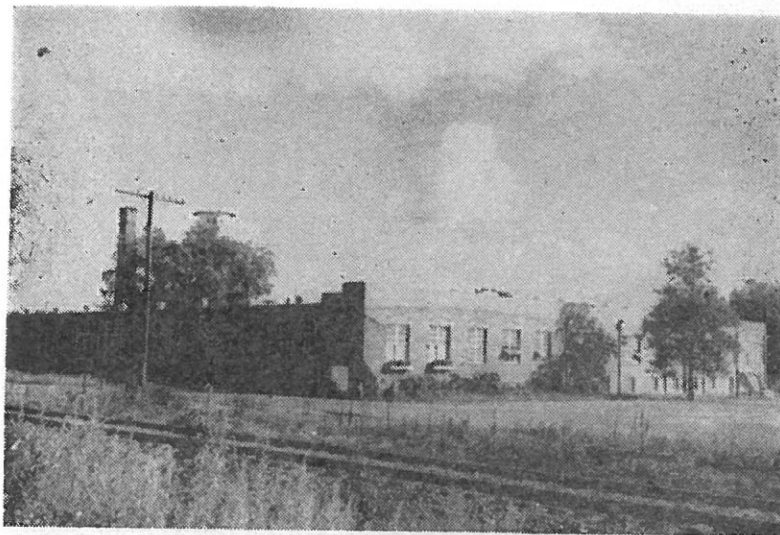
A weekly newspaper is published in Cochran and a tri-county radio station also serves this area.

The Bell Telephone System has recently acquired a site for the construction of a modern building to house a dial system and is scheduled to begin operation in 1954.

The Georgia Department of Labor reports that climatic conditions are ideally suited for industry in providing reduced overhead expenses, fewer work stoppages, reduced absenteeism, and pleasant working and living conditions.



Lenkerd Company, Farm Implement Dealer



The L and H Shirt Company

CIVIC DEVELOPMENT

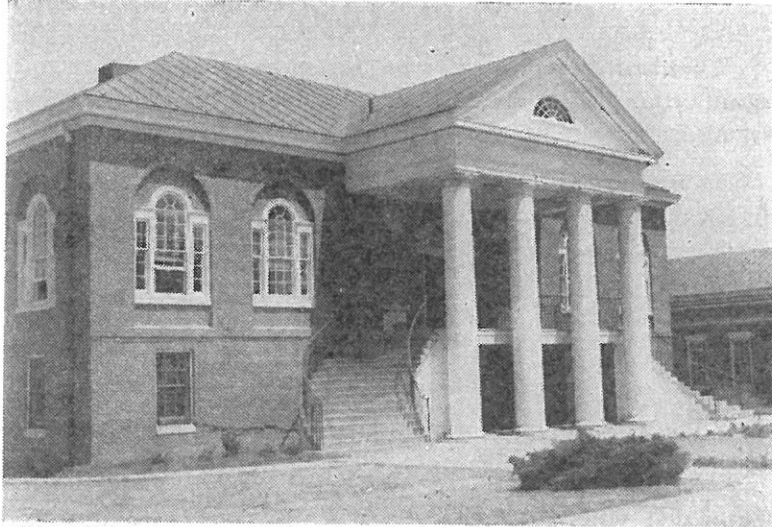
Cochran has a large number of civic and fraternal organizations that are very active and energetic in promoting improvement for Cochran and Bleckley County.

Some of the organizations are: The Junior Chamber of Commerce, Rotary Club, Woman's Club, Garden Club, farm organizations, church groups, Woodmen of the World, Masons, Order of the Eastern Star, American Legion and Auxiliary, Veterans of Foreign Wars and Auxiliary, BSA-GSA and Business and Professional Woman's Club.

The Middle Georgia Entertainment Association experienced a most successful season during its first year of operation. It brings a varied entertainment series to this area and has provided a program of cultural appeal to this community and to surrounding towns.

The community clubhouse is a vital part of the activities of the young people and provides a recreational center for them also. It is a meeting place for many of the city's organizations. The Womans Club was instrumental in having this building constructed in 1939.

The college library, with its many thousands of volumes, is open to the public and provides many valuable sources of information for the various organizations as well as for the students.



Library-Administration Building, Middle Georgia College



The Community Club House

HEALTH

Cochran and the surrounding area is served by a number of physicians. Their services are supplemented by a public health office.

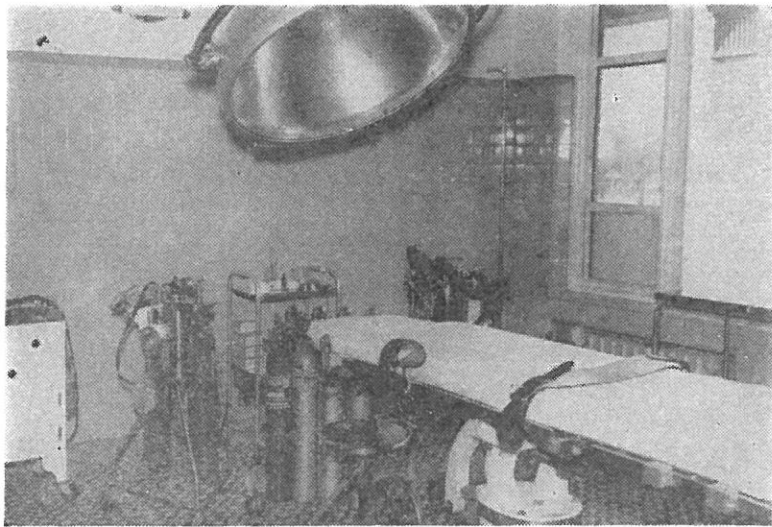
Clinics are held regularly and in addition physical, dental, and eye examinations are conducted periodically in the public schools.

Although Cochran has no hospital the residents have access to the Taylor Memorial Hospital in Hawkinsville, which is only ten miles away—a lot closer than one would be to a hospital in a large city.

The hospital, modern and efficient, offers the best in facilities and medical care. A new wing is being erected which will give this plant ample space. The equipment compares with that of hospitals in metropolitan areas and is far better than the average hospital facilities.



Main Building, Taylor Memorial Hospital



Taylor Memorial Hospital Operating Room

AGRICULTURE

Bleckley county is one of the leading agricultural counties in the state. This is evidenced by the fact that there are three Master Farmers in the county. They are recognized throughout the state and nation as being outstanding in the practices of modern farming.

Prior to 1941, cotton was the principal cash crop and little thought was given to the proper use of land. Now the trend is toward scientific farming and many cotton and corn acres have been replaced with legumes and grasses. The new pasture program has opened the way to cattle farming on a large scale.

The climate and soil conditions favor the diversified type of farming.

There are many large beef herds and dairies in the county. Also, there are several large-scale egg producers who are following scientific methods and are profiting from this enterprise.

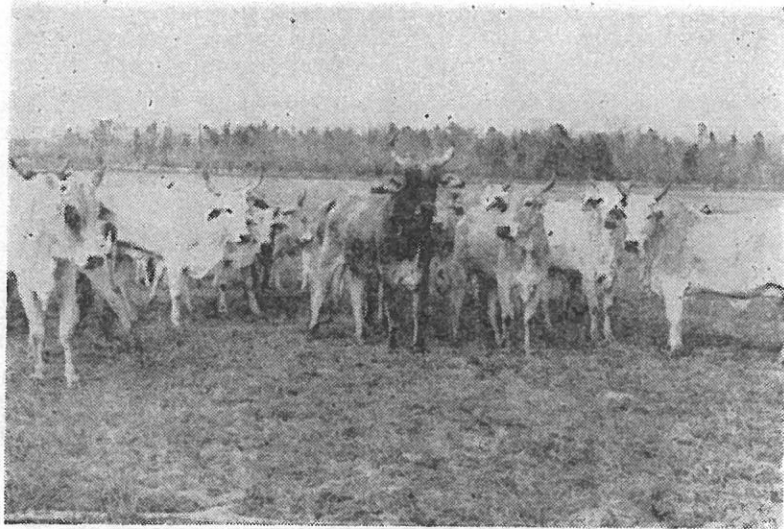
There are some eight hundred seventy farms in the county. The average farm is 138 acres. Most of the county land is devoted to farming but many of the acres are in pastures and woodland. The major cash crops are now cotton, corn, peanuts, and oats.

More than half the farmers have complete soil and water conservation programs in effect on their farms. Many have fish ponds which also provides water for the livestock, and in some instances, for irrigation.

The prominent plants used in pasture land are coastal bermuda, sericea and bahia grasses overseeded with crimson and white Dutch clover.

Modern terracing practices prevail as there are several hundred miles of terraces in the county.

The farmers are interested in maintaining woodland and during 1953 it is estimated that over 135,000 pine seedlings were set.



Part of Weatherly Brangus Herd



Bleckley White-Faced Hereford



Bleckley County Prize Cotton



Bleckley County Pasture Land

RECREATION

Much is offered in recreation for both the young and the old.

At Middle Georgia College there is always activity, especially in the field of sports. They have an indoor swimming pool, football field, baseball field, basketball court, and tennis courts. The football field is used for both high school and college games when they play at home. The tennis courts are open to all and the pool to the youngsters. Many spectators fill the stands for other athletic events.

In addition to these the city has a municipal swimming pool which is very modern.

The county abounds in fish ponds, and the Ocmulgee River forms a boundary line between Bleckley and Houston counties. The area near the river is a paradise for the hunter and fisherman and the swamp provides such game as wild turkeys, quail, bear, beaver, alligators, and many other forms of wild life.

Other recreational features are the movies, the drive-ins, and the programs presented by the Middle Georgia Entertainment Association. All these activities go far toward providing wholesome recreation for the residents.



Recently Constructed Municipal Pool



Volley Ball Court, Cochran High School

TOURIST FACILITIES

The county, situated close to the heart of the state and southeast, is crossed by many state and national highways. State highways No. 87, No. 26, No. 112, No. 278, and 126 converge here as well as U. S. routes No. 23 and No. 129.

These roads are in excellent condition and are maintained the year round by the highway department.

A roadside park project has been undertaken by the Junior Chamber of Commerce and the parks are scheduled for completion in 1954. The parks are designed for the tourists and their use.

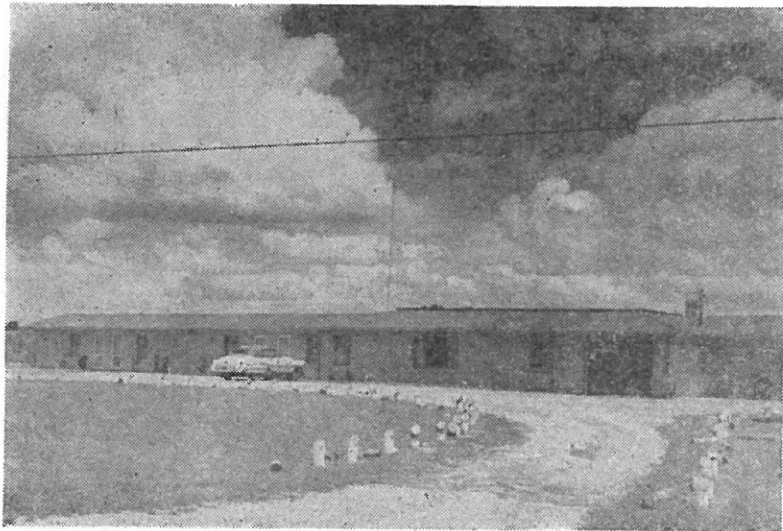
Three motels serve the city and are convenient to passing motorists. A hotel is located in downtown Cochran.

A great deal of tourist trade is experienced since this is a main and frequently traveled route to Florida.

Adequate facilities are available for automobile repair and maintenance.



The Johnson Motor Court



The One Rose Motel

